

**REGION OF QUEENS MUNICIPALITY  
COMMITTEE OF THE WHOLE  
TUESDAY, JANUARY 16, 2018  
9:00 a.m.**

**PRESENT:** Mayor David Dagley, Chair  
Councillor Kevin Muise  
Councillor Heather Kelly  
Councillor Brian Fralic  
Deputy Mayor Susan MacLeod  
Councillor Jack Fancy  
Councillor Raymond Fiske  
Councillor Gilbert Johnson  
Jennifer Keating-Hubley, Interim Chief Administrative Officer  
Christine Watson, Recording / Management Secretary

**1.0 CALL TO ORDER:**

Mayor Dagley called the meeting to order at 9:00 a.m.

**1.1 Approval of Agenda**

**It was moved by Deputy Mayor MacLeod and seconded by Councillor Fiske that the Agenda be approved as presented.**

**MOTION CARRIED unanimously.**

**1.2 Approval of Minutes – November 21, 2017**

**It was moved by Councillor Fralic and seconded by Councillor Fancy that the November 21, 2017 minutes be approved as circulated.**

**MOTION CARRIED unanimously.**

**1.3 Public Comment**

Leon Robertson, 45 College Street, Liverpool – Mr. Robertson commented that he was looking forward to the Nova Scotia Power presentation.

**2.0 PRESENTATION**

**2.1 Nova Scotia Power – Jason Lyver & Trevor Beaton**

Mayor Dagley welcomed Jason Lyver, System Forester-Distribution, and Trevor Beaton, Shared Services Manager, Nova Scotia Power to present to Council on their Vegetation Management Program (copy of presentation attached to original set of Minutes).

Some highlights included:

- Strategic Approach – Includes four projects identified as Reactive Work, Preventative Work, Sustainability Work and Widening.
- Showed and explained a Three Phase Distribution Line
- Showed and explained a Single Phase Distribution Line
- Feeder Classification – Classifications are broken down into four categories: Urban Cycle, Urban Reclamation, Rural Reclamation and Sustainability
- Town of Liverpool – Project Mapping – 58 kms of line clearing were completed in Queens County last year
- Urban Cycle – Approximately 280 kms of line clearing completed, which takes the health of the trees into consideration
- Urban Reclamation – considered as cottage areas
- Rural Reclamation – Manual – defined Right of Way
- Rural Reclamation – Mechanical (use of heavy machinery) – approximately 200 kms are completed annually
- Distribution Right of Way Widening – The cutting is usually stockpiled and belongs to the landowners. Individual arrangements are made prior to work being completed.
- Sustainability – long term compatibility through natural re-growth
- Herbicide Application – followed using rules set by Nova Scotia Department of Environment (is tree specific and won't kill grass)
- Right of Way Standard – The ROW is presently set at 20 feet from lines, but is seeking to increase the distance to 40 feet.
- Tree Replacement Program – If trees need to be removed, there is a meeting with homeowners to exchange what is being removed with more compatible trees (there is a list of approximately 20 species which can be found on their website).

The vegetation management program is a 2 year period which makes it easy to adjust to problem areas.

The customer application requests have a 10 day turnaround period, which are scoped and prioritized.

All work is contracted out with field checks as part of the follow-up.

In determining clearing trees, consideration is given to:

- science,
- branches,
- fungus – root rot
- visual inspections
- work with landowners, and
- tree replacement program (usually done with less aggressive growing trees, that tend not to grow over 20 feet high).

For more information visit [www.nspower.ca](http://www.nspower.ca).

3.0 IN CAMERA

**It was moved by Councillor Kelly and seconded by Councillor Fralic that the proceedings go "In-Camera" at 10:15 a.m. to discuss the following:**

**3.1 Contract Negotiations MGA 22(2)e**

Council recessed for 10 minutes at 10:15 a.m.

**It was moved by Councillor Fiske and seconded by Councillor Muise that the proceedings exit the "In-Camera" session at 12:40 p.m.**

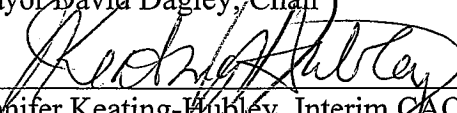
**MOTION CARRIED unanimously.**

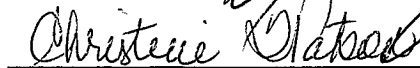
4.0 ADJOURNMENT

**It was moved by Councillor Fancy and seconded by Deputy Mayor MacLeod that the meeting be adjourned.**

There being no further business, the meeting adjourned at 12:40 p.m.

  
\_\_\_\_\_  
Mayor David Dagley, Chair

  
\_\_\_\_\_  
Jennifer Keating-Hubley, Interim CAO

  
\_\_\_\_\_  
Christine Watson, Recording / Management Secretary

Date Approved: February 20, 2018



JANUARY 2018 - REGION OF QUEENS MUNICIPALITY

---

## NSPI's Vegetation Management Program

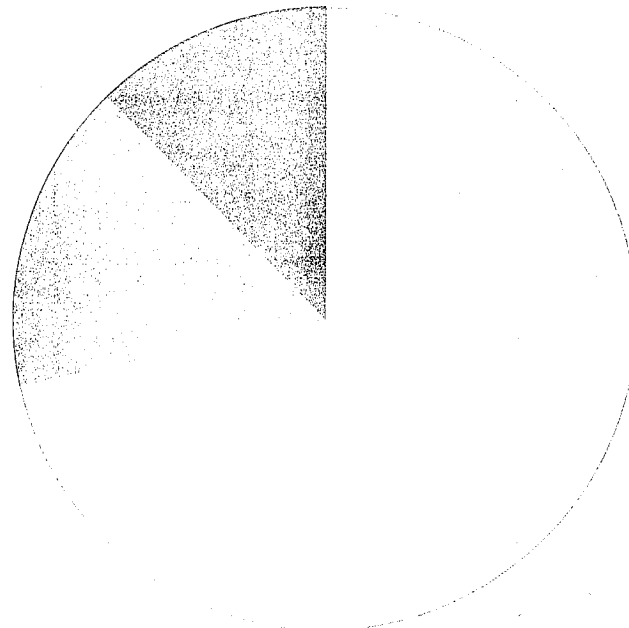
## Strategic Approach

DISTRIBUTION PROJECTS ARE IDENTIFIED BY THE FOLLOWING MEANS OF A BALANCED APPROACH:

- *Reactive work* - based upon a review of feeder performance over previous years.
- *Preventative work* - based upon vegetation conditions presenting a potential performance issue.
- *Sustainability work* - based upon a vegetative condition presenting a potential for lower cost management.
- *Widening* - based upon a need for a larger right of way for greater clearance requirements.

# Distribution Program Strategy

Vegetation Management Allocation

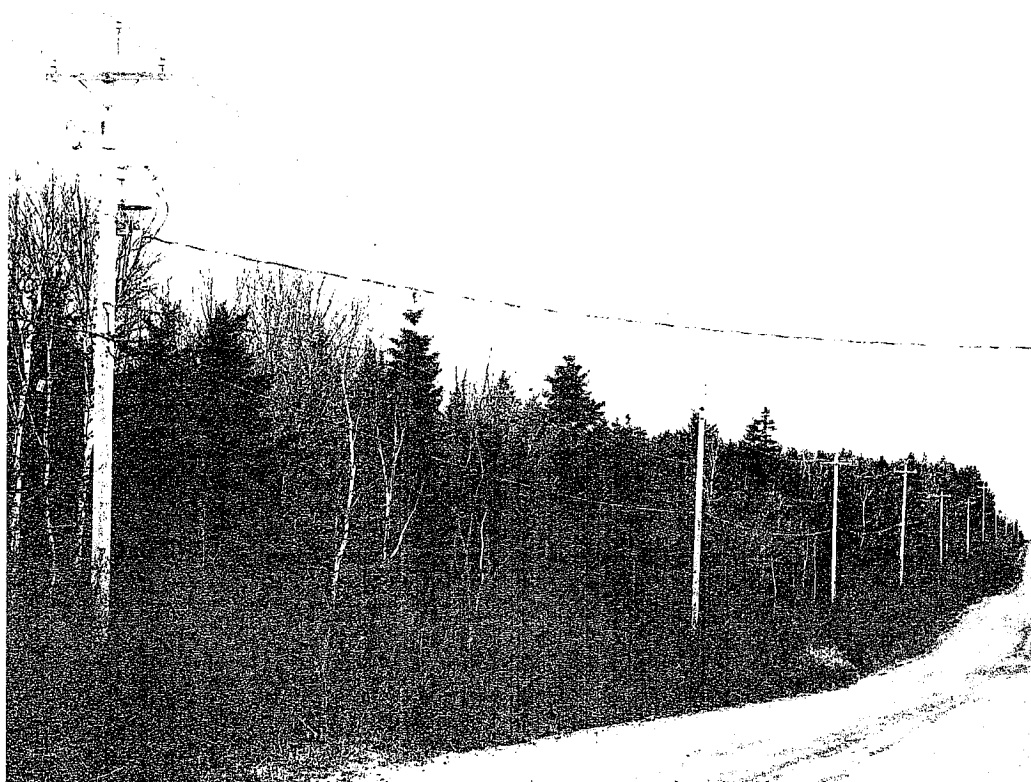


- Reactive
- Preventative
- Sustainability
- Widening

# Transmission Line (230 and 345Kv)



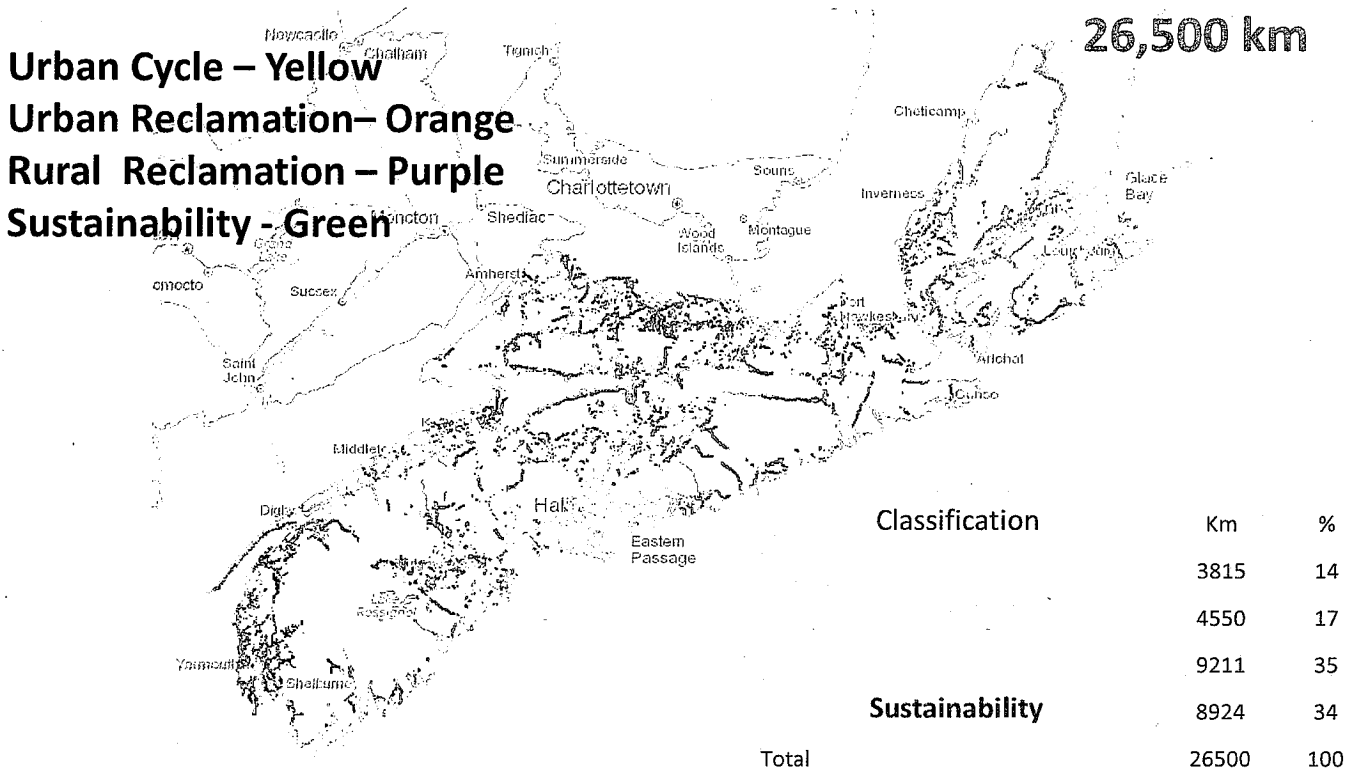
# Three Phase Distribution Line



# Single Phase Distribution Line










# Feeder Classification – Where We Work



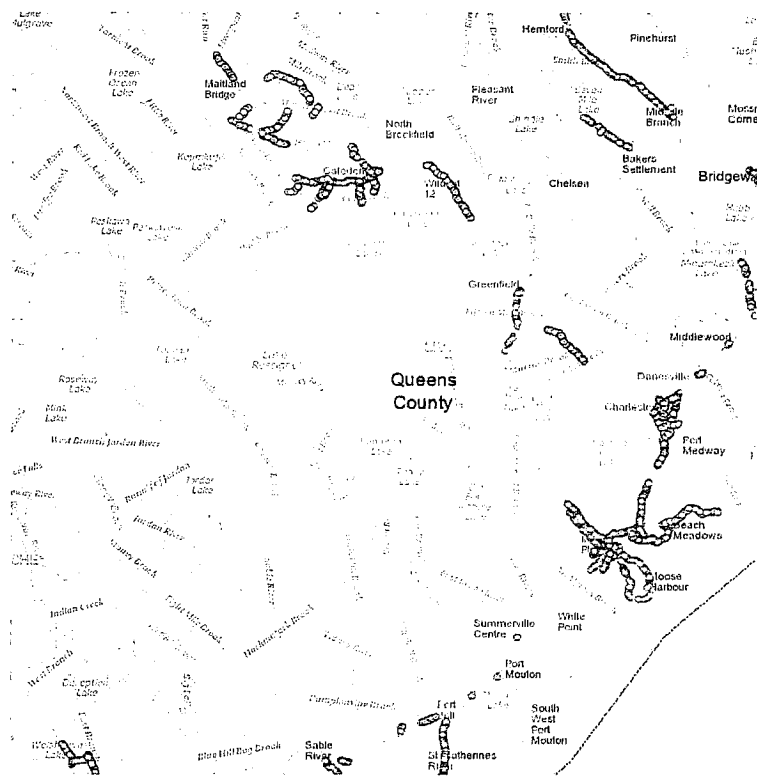
# Project Mapping



## Town of Liverpool

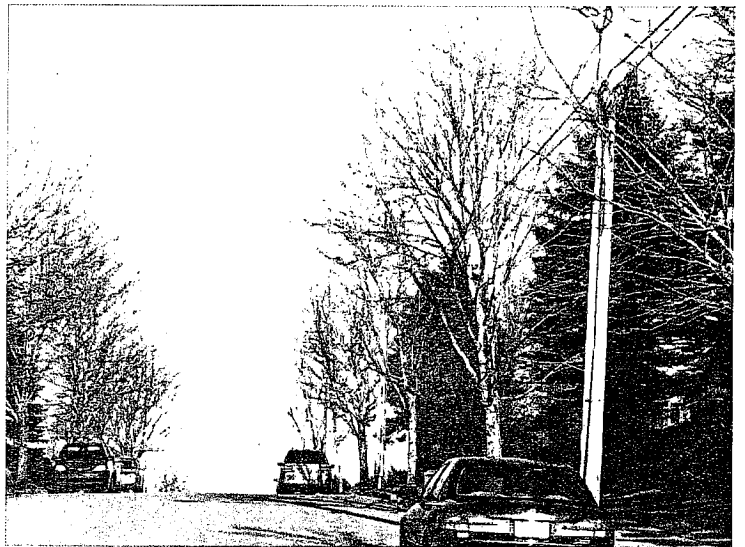
-  Collect
-  Birds Nest
-  Customer Concern
-  Completed
-  Partial
-  Permissioned
-  Skipped

# Queens County



# Urban Cycle

Approximately 280 km completed annually



# Urban Reclamation Potential

(often an aspect in cottage areas )



# Rural Reclamation (Manual)



Result of Trimming Only

Defined Right of Way



# Rural Reclamation (Mechanical)

Approximately 200 km completed annually

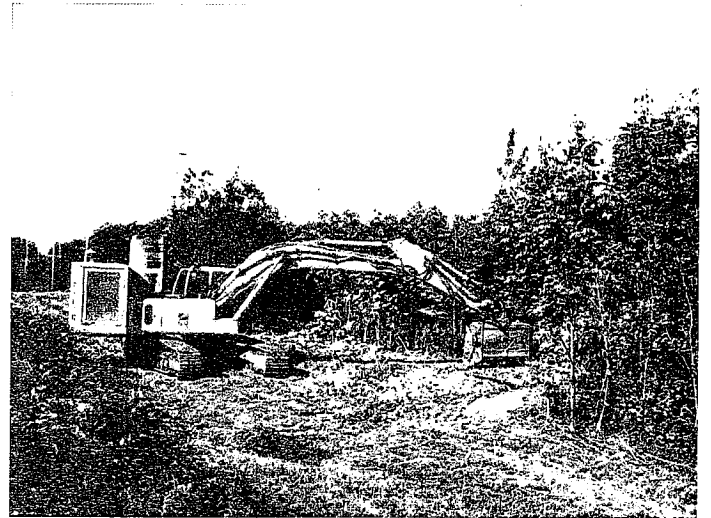
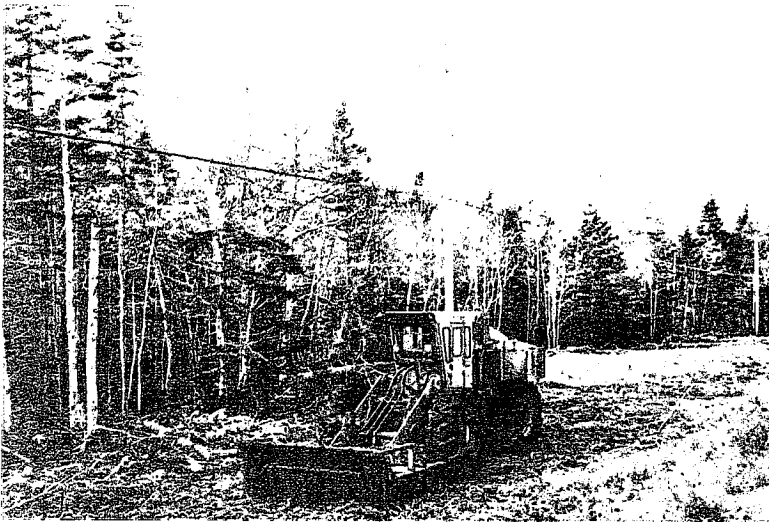


Before

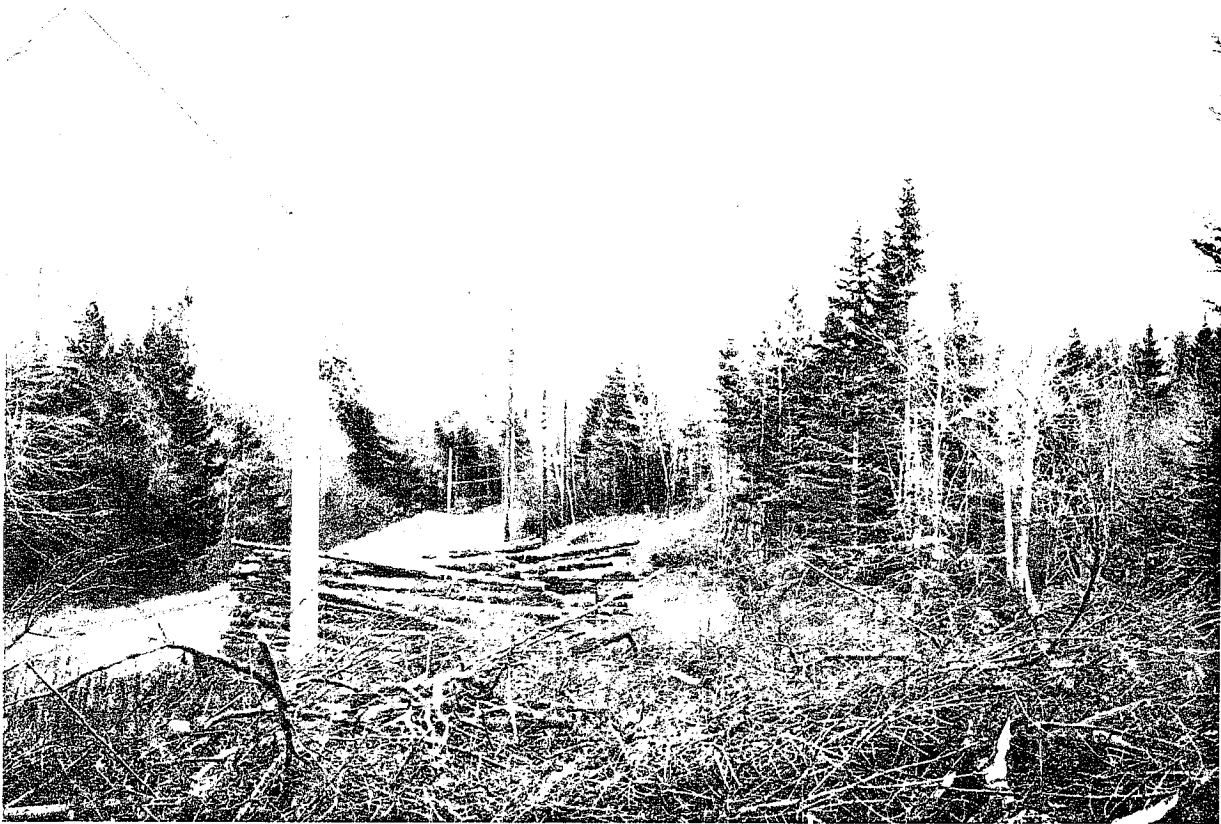


After

# Mechanical Approach



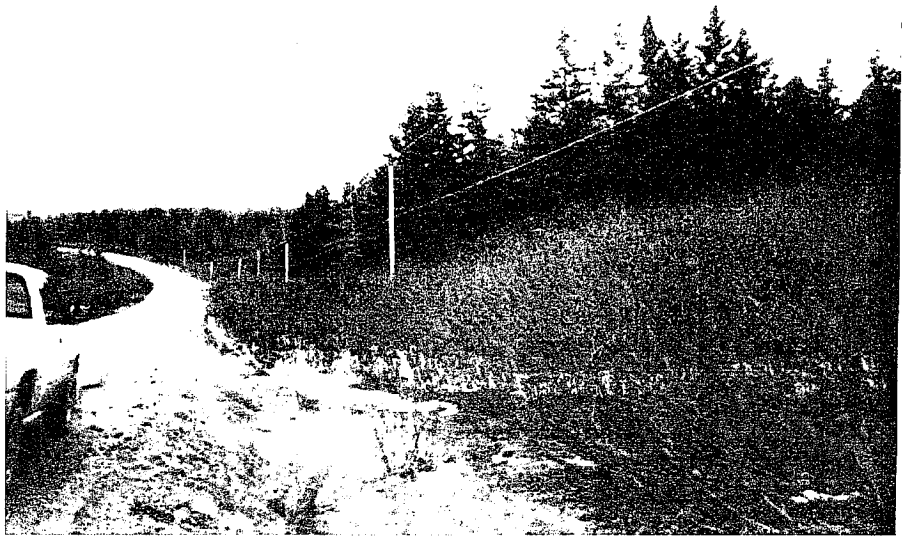
# Distribution Right of Way Widening



# Sustainability

## Long Term Compatibility

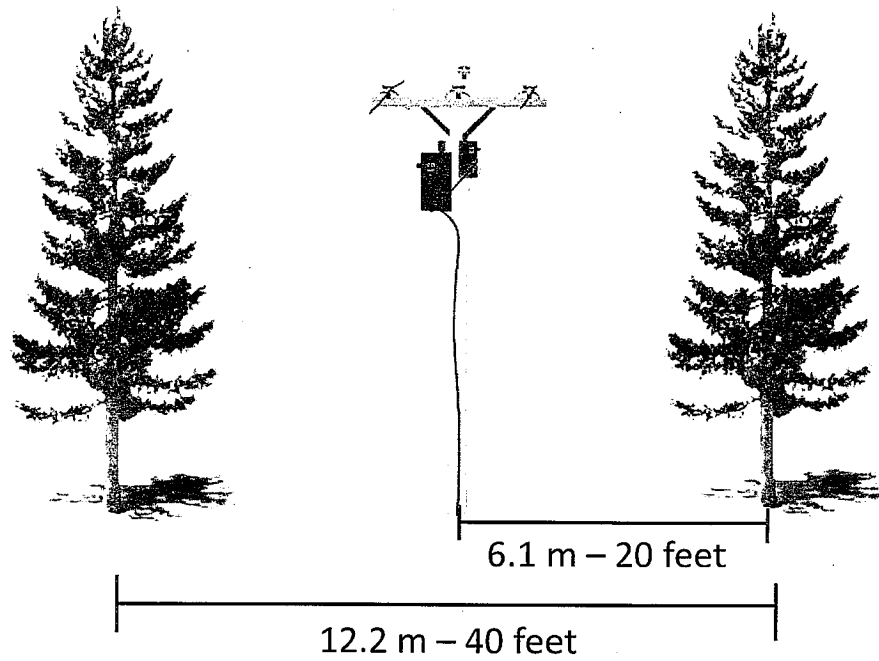
- Natural (stable ecology)



# Selective Herbicide Application

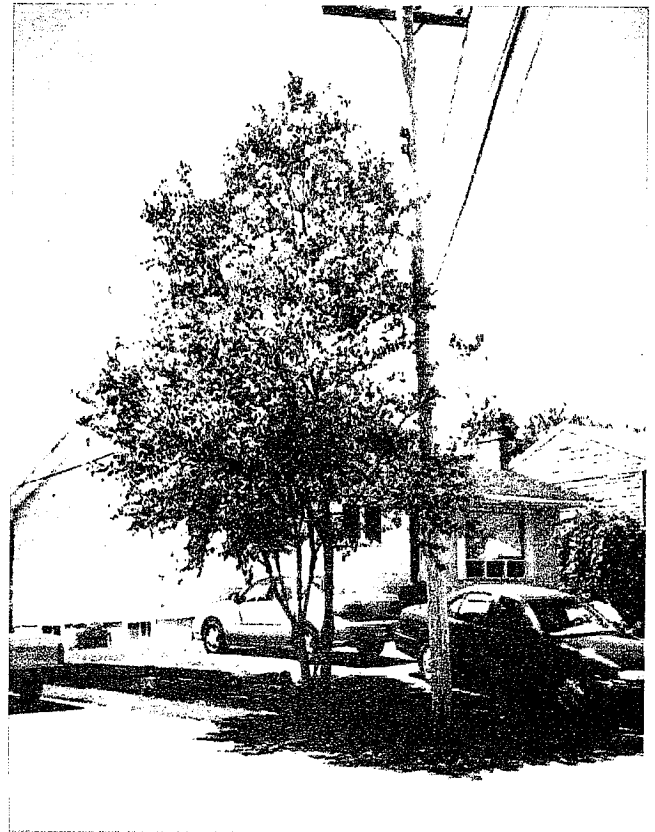


# Distribution ROW Standard



# Tree Replacement Program

Forestry Coordinators will meet customers about trees that are growing directly underneath primary conductors ....



Thank You

Questions?