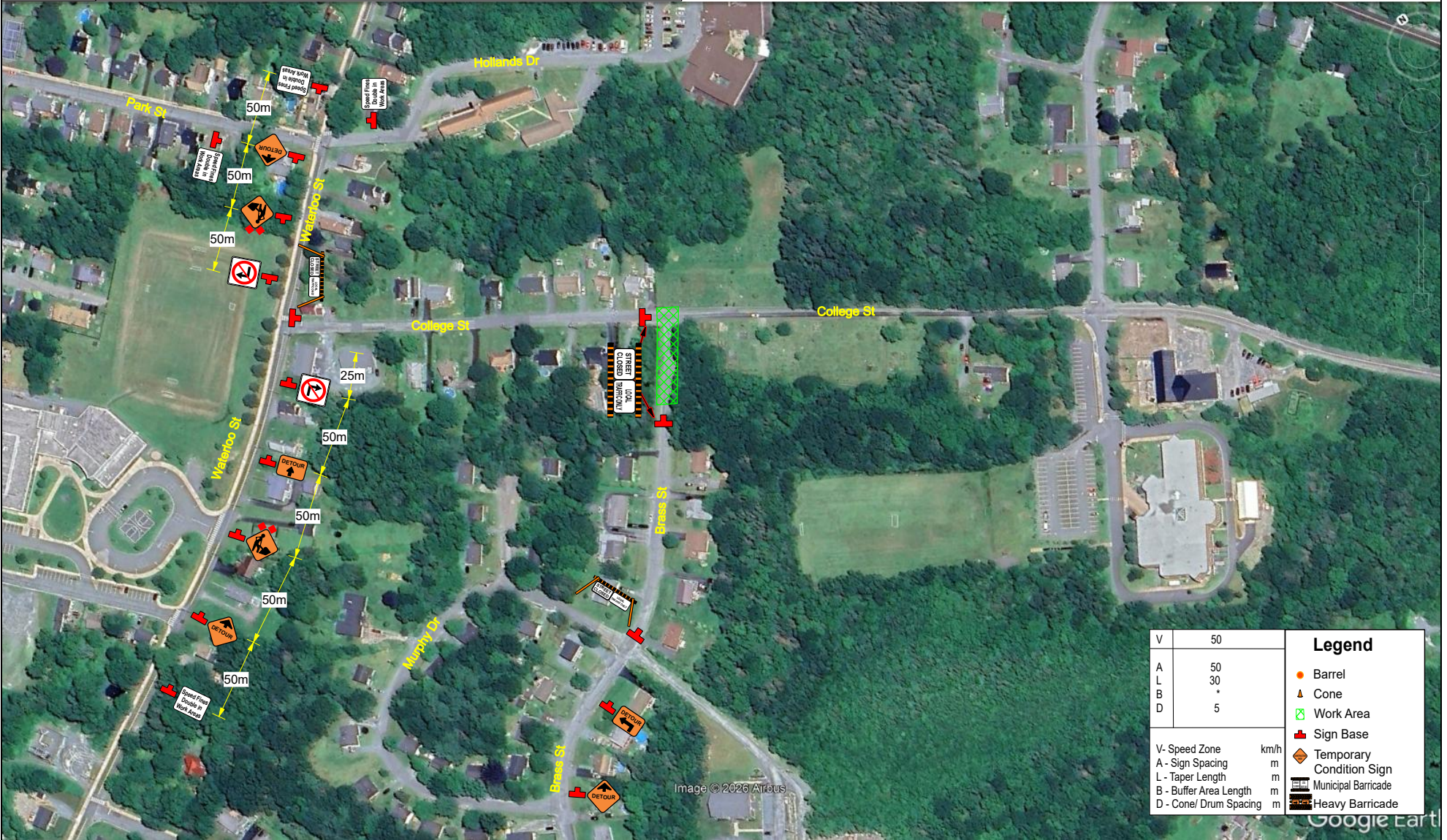




Date: 05/06/2026 **Author:** Sondra Borden (sborden@easterntraffic.ca) **Project:** Mount Pleasant Water
Page #: 9 **Job #:** 2503616 **Super:** M. Howie
Sign Procedure: 13.5.14 **Device Procedure:** 13.5.18

Comments:
 -This plan illustrates a road closure to facilitate pipework.
 -Using application guide C-114 from the NSTCM (2024.04.02).



V	50	Legend
A	50	
L	30	
B	*	
D	5	● Barrel
		▲ Cone
		▨ Work Area
		■ Sign Base
V - Speed Zone	km/h	◊ Temporary Condition Sign
A - Sign Spacing	m	▩ Municipal Barricade
L - Taper Length	m	▩ Heavy Barricade
B - Buffer Area Length	m	
D - Cone/ Drum Spacing	m	

Image © 2026 Airbus