



Region of Queens Municipality Solid Waste & Organics Guide 2026

NEW SWITCHING from BLACK TO CLEAR BAGS



Solid Waste Management Facility
3750 Highway #8, Milton

Hours of Operation
Monday - Friday 8am - 4pm
Saturday 8am - 2pm

Did you know?

Queens residents are entitled to **four free trips per calendar month** at the Solid Waste Management Facility. Loads must be sorted and delivered directly from each resident's household in a non-commercial vehicle (and/or trailer) of less than one tonne capacity. Recyclable materials are not accepted at this facility.

Closed

New Year's Day	Labour Day
Heritage Day	National Day For Truth & Reconciliation
Good Friday	Thanksgiving Day
Easter Monday	Remembrance Day
Victoria Day	Christmas Day
Canada Day	



Region of Queens Municipality
Solid Waste Management
902-354-7170
www.regionofqueens.com/waste



Keep Queens Clean
www.regionofqueens.com

Printed on 100% Recycled Paper



Region of Queens Municipality Solid Waste & Organics Collection Schedule 2026

Pick-up for Greenfield & South Queens
(excluding Brooklyn, Beach Meadows & Liverpool)

**Pick-up for North Queens, Brooklyn,
Beach Meadows & Liverpool**

**Has your solid waste or organics collection been missed?
Are you experiencing collection problems?
Call the Region of Queens Municipality at 902-354-7170.**

January 2026						
S	M	T	W	T	F	S
				1	2	3
4	5	6	7	8	9	10
11	12	13	14	15	16	17
18	19	20	21	22	23	24
25	26	27	28	29	30	31

February 2026						
S	M	T	W	T	F	S
1	2	3	4	5	6	7
8	9	10	11	12	13	14
15	16	17	18	19	20	21
22	23	24	25	26	27	28

March 2026						
S	M	T	W	T	F	S
1	2	3	4	5	6	7
8	9	10	11	12	13	14
15	16	17	18	19	20	21
22	23	24	25	26	27	28
29	30	31				

April 2026						
S	M	T	W	T	F	S
			1	2	3	4
5	6	7	8	9	10	11
12	13	14	15	16	17	18
19	20	21	22	23	24	25
26	27	28	29	30		

May 2026						
S	M	T	W	T	F	S
					1	2
3	4	5	6	7	8	9
10	11	12	13	14	15	16
17	18	19	20	21	22	23
24	25	26	27	28	29	30
31						

June 2026						
S	M	T	W	T	F	S
	1	2	3	4	5	6
7	8	9	10	11	12	13
14	15	16	17	18	19	20
21	22	23	24	25	26	27
28	29	30				

July 2026						
S	M	T	W	T	F	S
			1	2	3	4
5	6	7	8	9	10	11
12	13	14	15	16	17	18
19	20	21	22	23	24	25
26	27	28	29	30	31	

August 2026						
S	M	T	W	T	F	S
						1
2	3	4	5	6	7	8
9	10	11	12	13	14	15
16	17	18	19	20	21	22
23	24	25	26	27	28	29
30	31					

September 2026						
S	M	T	W	T	F	S
		1	2	3	4	5
6	7	8	9	10	11	12
13	14	15	16	17	18	19
20	21	22	23	24	25	26
27	28	29	30			

October 2026						
S	M	T	W	T	F	S
				1	2	3
4	5	6	7	8	9	10
11	12	13	14	15	16	17
18	19	20	21	22	23	24
25	26	27	28	29	30	31

November 2026						
S	M	T	W	T	F	S
1	2	3	4	5	6	7
8	9	10	11	12	13	14
15	16	17	18	19	20	21
22	23	24	25	26	27	28
29	30					

December 2026						
S	M	T	W	T	F	S
		1	2	3	4	5
6	7	8	9	10	11	12
13	14	15	16	17	18	19
20	21	22	23	24	25	26
27	28	29	30	31		



Region of Queens Municipality Solid Waste & Organics Sorting Guide 2026

Residential Curbside Pick Up:

Every Second Week (see collection schedule)

Green Cart - Organics
Clear Bags - Waste
(with 1 privacy bag)

Clear Bag - Waste



Waste

Pet litter, pet waste, coffee pods, broken bottles, drinking glasses, vases, heat treated & window glass, cookware, vacuum cleaner bags, CD's & DVD's, toys, books, clothing, footwear, all wipes (baby, cleaning & hygienic) diapers, personal hygiene products, dryer sheets & lint, wallpaper, microwave popcorn bags, etc.

Privacy Bag Information:

All bags contained within the larger clear bag shall also be clear other than one (1) privacy bag per eligible premises per collection cycle.

The privacy bag shall meet the following specifications:

- Made of opaque, black plastic, watertight of an overall size of no smaller than 0.65 metres of 0.90 metres and no larger than 0.76 metres by 1.20 metres when empty.
- Bag must have a thickness of at least 0.375 mm to prevent breakage, tearing or splitting upon collection.
- Bag may only contain permitted personal hygiene products or medical waste. No sharps permitted in privacy bag.

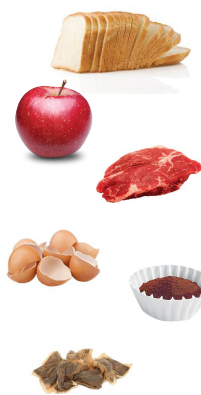
No organics, recyclables or construction/ demolition materials in waste bags.

Use CLEAR bags ONLY.

One (1) privacy bag per eligible premises, per collection day.

Do NOT use grocery bags or feed type bags.

Green Cart Organics



All Food Waste

Meat, fish, bones, egg shells, tea bags, coffee grounds, fruits & vegetables, cooking oil, cooking fat, soiled and/or wet paper, paper towels, waxed paper, napkins, plant materials: leaves, brush, weeds, sawdust, wood shavings, plants, grass clippings, etc.

No plastics, metals or glass in the green cart. Biodegradable bags must bear this logo:



What? Where? When? R6RECYCLES

Waste Collection & Sorting App



Download R6RECYCLES
for Android and Apple devices



Download this FREE app to take the guesswork out of sorting waste. Don't know where it goes? Ask the App!

Get notifications on collection disruptions, reminders for your regular collection day & special collection days.

Receive reminders even if you don't have a smartphone or computer. Ask Us How!
Call 902-354-7170



Solid Waste & Organics Collection Information

- Collection is every second week, as indicated on the solid waste & organics collection schedule.
- Clear bags (with privacy bag), and organics (green carts) are both collected on the same day.
- Materials must be at the curb by 8 am on collection day.
- Collection occurs on all holidays with the exception of Christmas Day and New Year's Day (residents normally collected on Thursday, January 1, 2026 will receive collection on Friday, January 2, 2026 and residents normally collected on Friday, December 25, 2026 will receive collection on Monday, December 28, 2026).
- All special clean-ups occur on the same day as regular collection.

Special Waste Collection Information

Christmas Tree Collection

January 5 - January 9
January 12 - January 16



Undecorated, natural Christmas trees can be placed out at curbside with your other collection items, on your regularly scheduled collection day.

Natural, undecorated trees can also be taken to either of the Leaf & Yard Waste sites, noted below.

Spring Clean-Up

April 13 - April 17
April 20 - April 24



Fall Clean-Up

October 19 - October 23
October 26 - October 30

Clean-up materials are bulky items that are not collected during your regular collection. Items included are furniture, wood, etc. Not included are construction items such as drywall or asphalt shingles, electronic waste, household hazardous waste and vehicle tires. Clean-up occurs on your normally scheduled collection day. Items can also be taken to the Solid Waste Management Facility.

Spring Leaf & Yard Waste

April 27 - May 1
May 4 - May 8



Fall Leaf & Yard Waste

November 2 - November 6
November 9 - November 13

**** Plastic Bags are not permitted. Paper Bags ONLY.****

Leaf and yard waste materials includes leaves, branches, grass clippings and plant materials. Items can also be taken to one of the Leaf & Yard Waste Sites:

Leaf & Yard Waste
1799 Shore Road
Western Head

Solid Waste
Management Facility
3750 Highway 8, Milton

