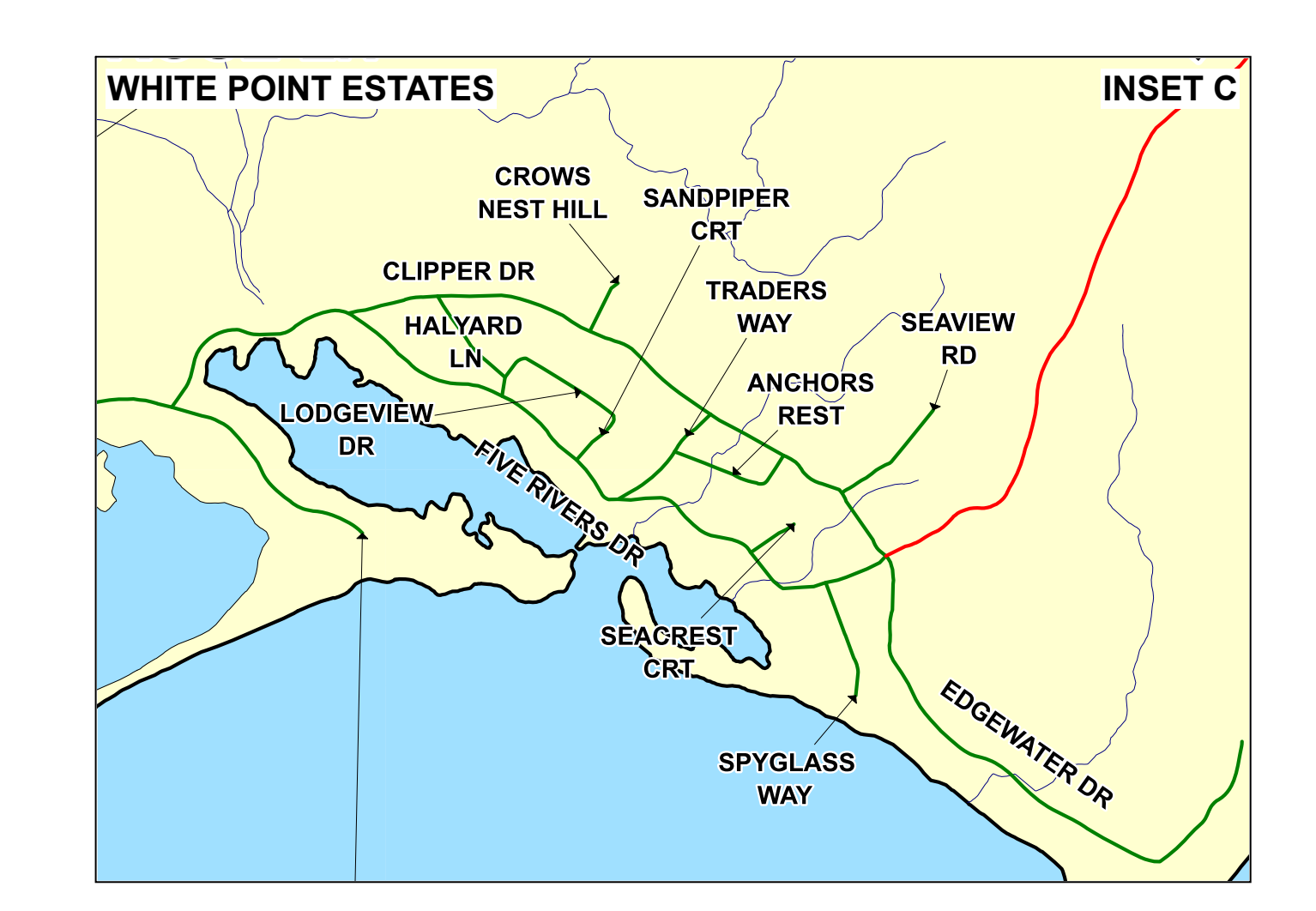
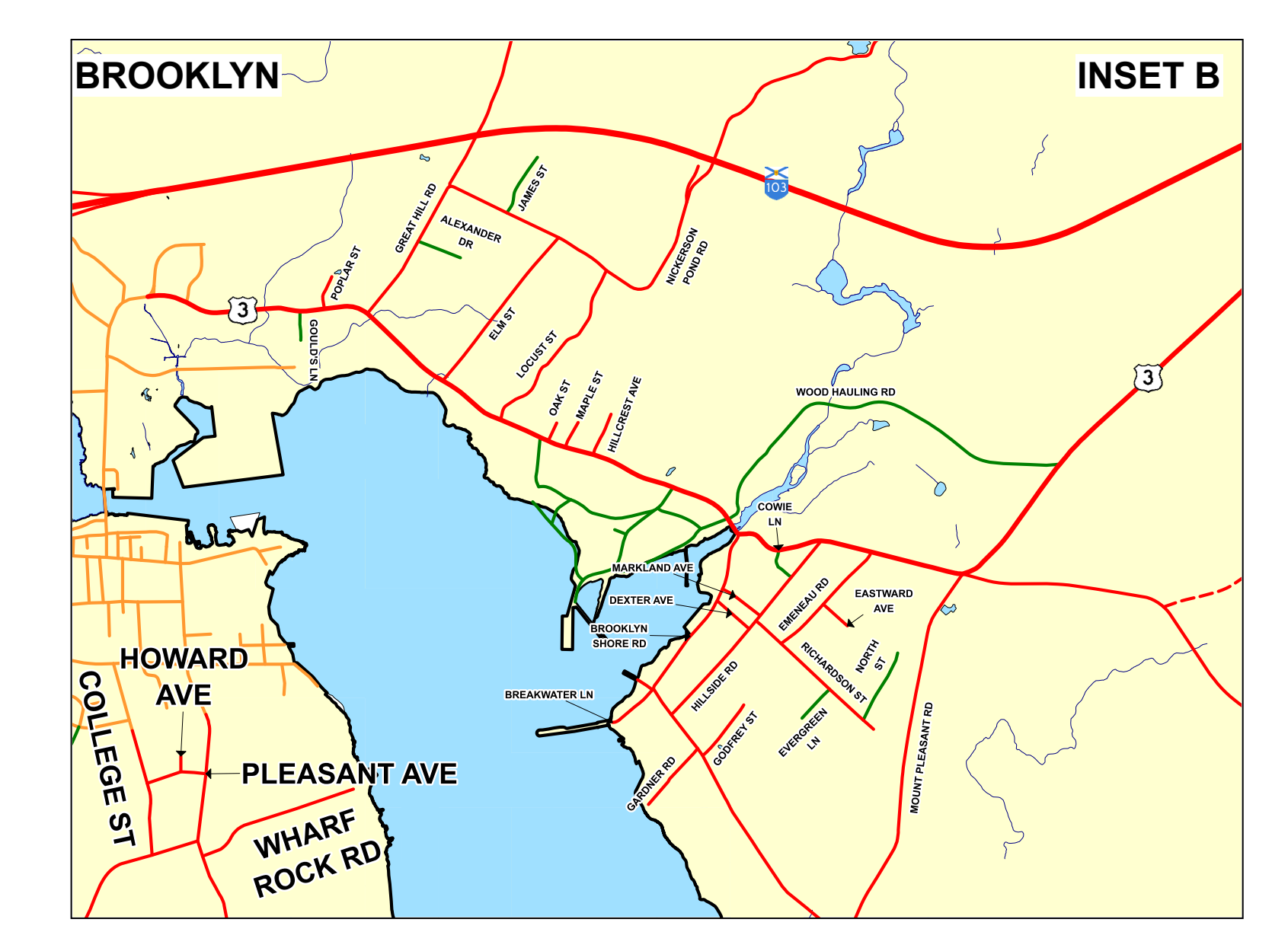
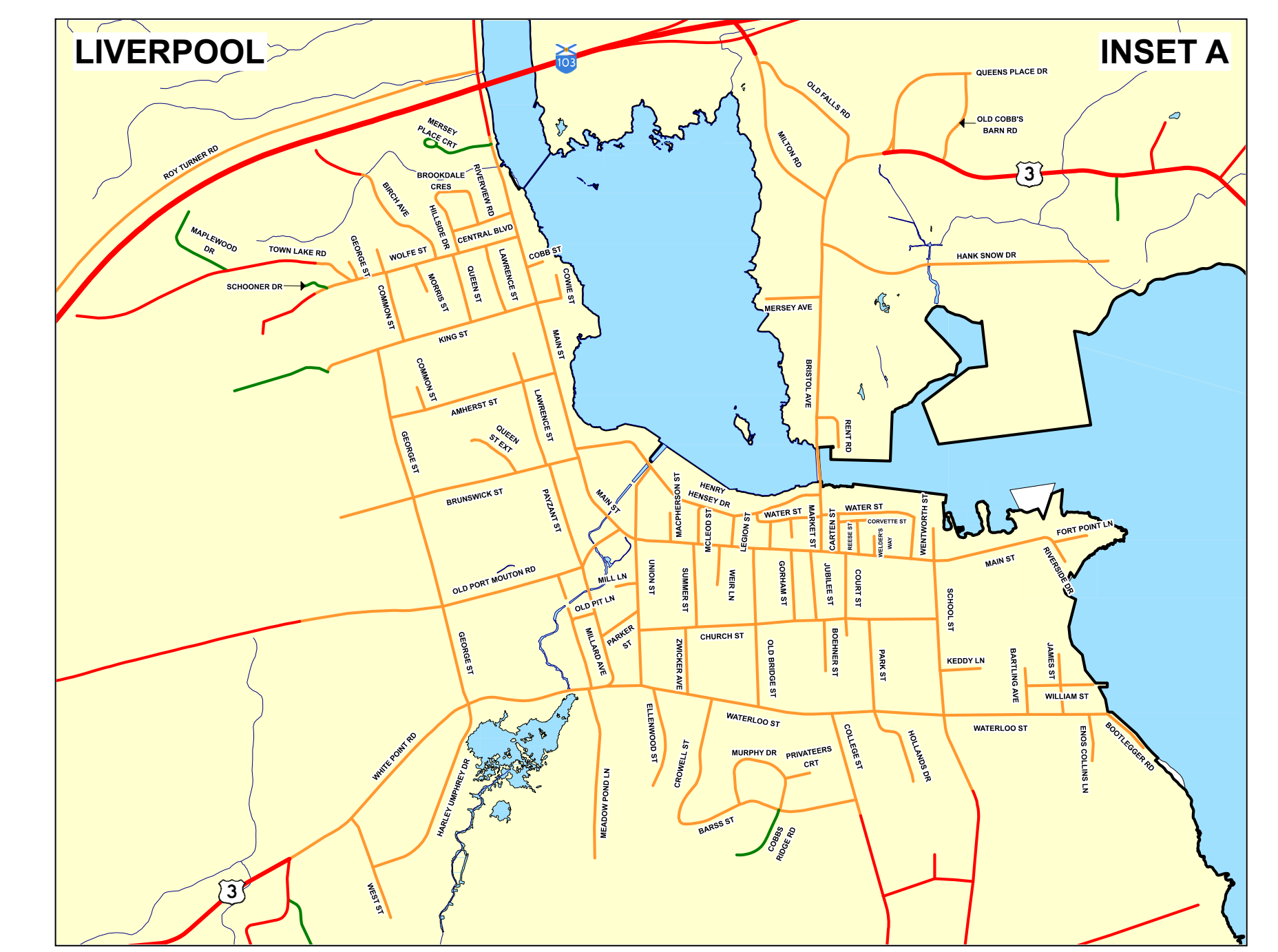
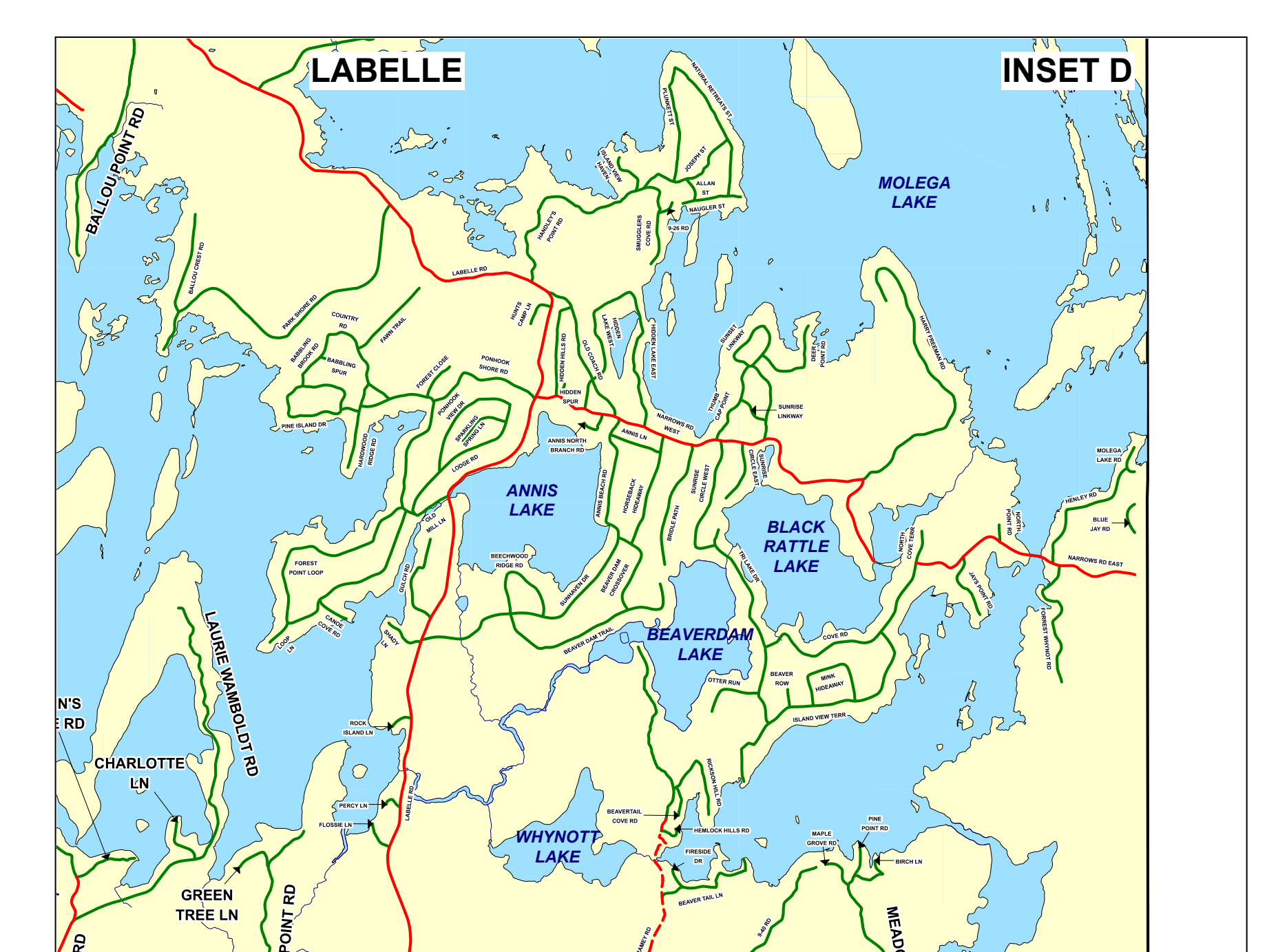
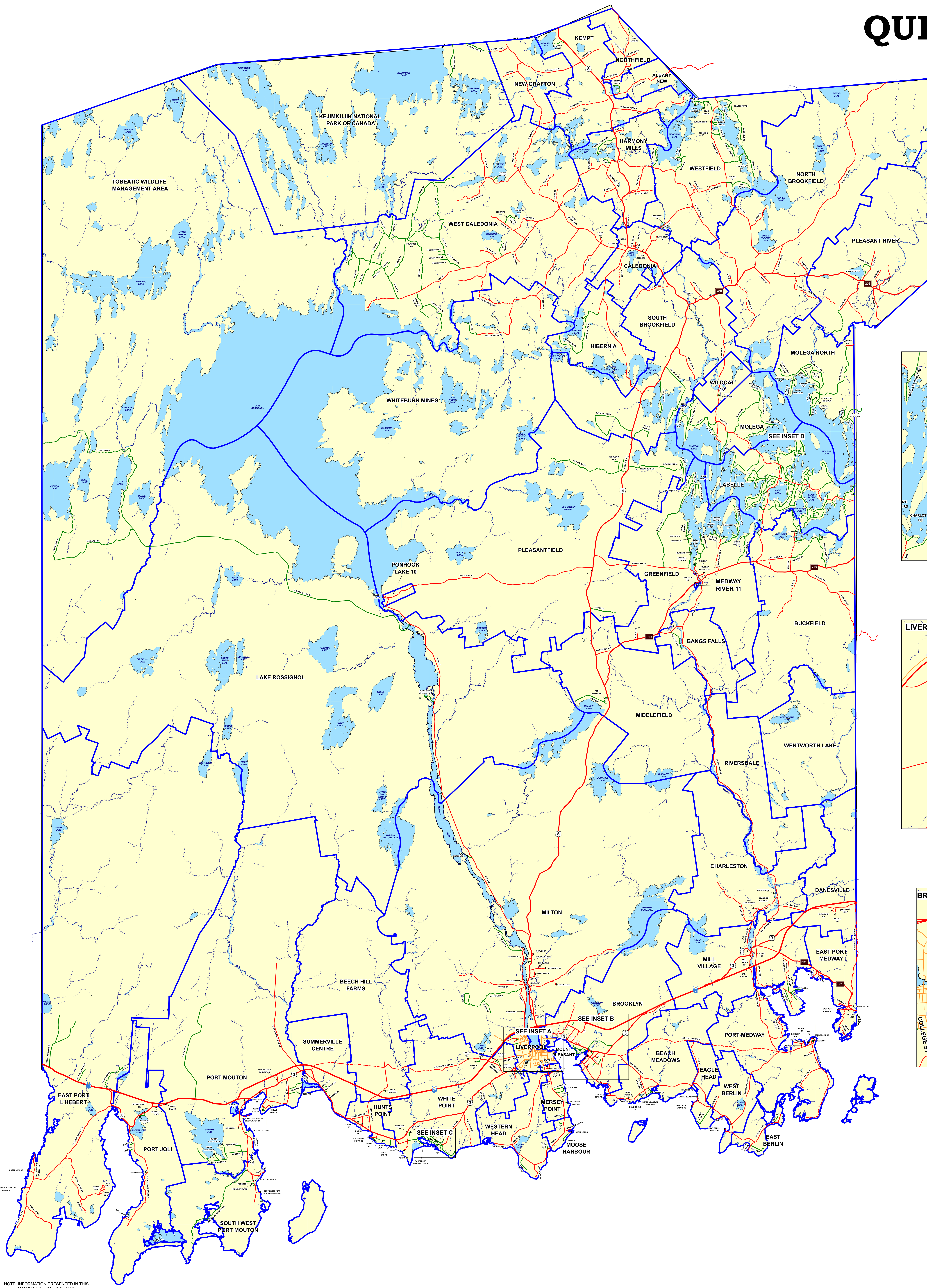


# QUEENS COUNTY



NOTE: INFORMATION PRESENTED IN THIS MAP IS SUBJECT TO CHANGE

ROAD MAPPING SOURCE:  
NOVA SCOTIA GEOMATICS CENTRE, AMHERST  
COMMUNITY BOUNDARY MAPPING SOURCE:  
NOVA SCOTIA GEOMATICS CENTRE, AMHERST  
PREPARED BY: PLANNING DEPARTMENT,  
REGION OF QUEENS MUNICIPALITY, NOVEMBER 2013

- PUBLIC ROADS
- PRIVATE ROADS
- LIVERPOOL STREETS
- COMMUNITY BOUNDARY

