

Safety Tips...

- Think and practice safety on all waterways
- Wear your life jacket...the experts do
- Know your ability...and the waterway's demands
- Do not go out alone...there is safety in numbers
- Dress in layers or wear a dry/wet suit, depending on the weather
- Leave a float plan before you put in. Let someone know where you are putting in, taking out and when you will return
- Learn waterway reading
- Learn CPR and First Aid
- Learn use of ropes and other tying materials
- Learn self rescue (including deep water re-entry)
- Maintain your gear throughout the year
- Keep your body in good physical condition
- Know how to swim
- Watch for motorboats. Stay to the right and turn into the wake
- Check local weather report prior to leaving

Safety Equipment Checklist...

- Floatation gear
- Extra paddle
- First aid kit
- Insect repellent and sunscreen
- Flashlight and extra batteries
- Sharp knife or axe
- Whistle, bailer, waterproof matches, compass and map
- Drinking water

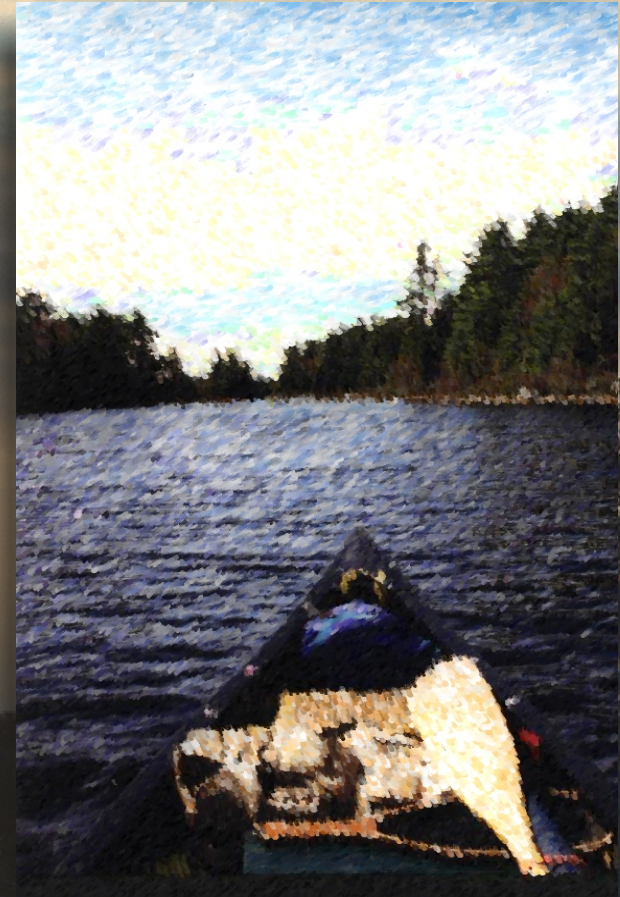
Respect Our Property...

- Do not litter or pollute the water with trash or other waste. Pack out what you pack in
- Obey fire regulations
- Respect private ownership. Access to private lands should be by invitation only

THE MERSEY RIVER

The Mersey River was once known as one of the best Atlantic Salmon rivers on the South Shore and was used for decades for the storage and running of logs to the various mills which once lined her banks. Although the Atlantic Salmon stocks have been depleted the angler can still pursue numerous opportunities for Brown Trout and the ever exciting Smallmouth Bass. As an added bonus, and to learn more about the endangered Atlantic Salmon, why not book a guided tour of the Mersey Bio Diversity Facility.

QUEENS COUNTY THE ADVENTURE AWAITS...



For other brochures in this series, visit the Visitor Information Centres in Liverpool or Caledonia or contact:



Region of Queens Municipality

Region of Queens Municipality
Liverpool, NS B0T 1K0 Canada
Phone: 902-354-5741
Toll Free: 1-800-655-5741
info@regionofqueens.com
www.regionofqueens.com

MERSEY RIVER
Big Falls to Lower Great Brook
For additional information go to
www.queens.ca
Beginner / Family



Region of Queens Municipality

MERSEY RIVER

BIG FALLS TO LOWER GREAT BROOK

Routes whether for paddling, hiking, walking or biking are a great way to discover and explore "The South Shore's Great Experience." The outlined canoe trail has been designed to encourage people to learn more about waterways within the Region and provide an enjoyable boating experience.

Access

These directions proceed from Highway 103. Follow Highway 103 to Exit 19. At the base of exit ramp turn onto Route 8 towards the village of Milton. Continue for approximately 5.5 km (3.4mi). Turn left off Route 8 onto River Road. Follow River Road approximately 14km (8.75mi) to Fish Hatchery Road. Turn left onto Fish Hatchery Road, crossing the bridge and accessing the Mersey River from the boat launch on your right.

Description

This scenic route, designed with the beginner in mind, will take the traveller through a wilderness of untouched forest and limited development. The journey begins at the boat launch on the western shore of the Mersey River, just north of the bridge. Proceed southeasterly downstream for approx 8km to the eastern side of the Mersey River near the mouth of Lower Great Brook. Here there are opportunities to enjoy a shore side picnic, try fishing, or explore the shoreline and interesting driftwood configurations by foot, before paddling back up river to the boat launch. The evergreen shores, and numerous islands along this beautiful stretch of the Mersey River will give the explorer the opportunity to experience a river steeped in history and natural beauty which can be enjoyed from spring till late fall.

Mileage: Approx. 8km (5mi) one way

Skill Level: Beginner

Difficulty: Easy to moderate

Notes and Precautions

Beware of sudden changes in current and water level due to the regulation of these waters by Nova Scotia Power Hydro Dams. Also take note that the Mersey River is an all access river, so be prepared to encounter motorcraft.

A canoe trail is a publically owned waterway. When flowing through private property please respect owner's rights. Courtesy and common sense are important for a safe and memorable trip.



Region of Queens Municipality

